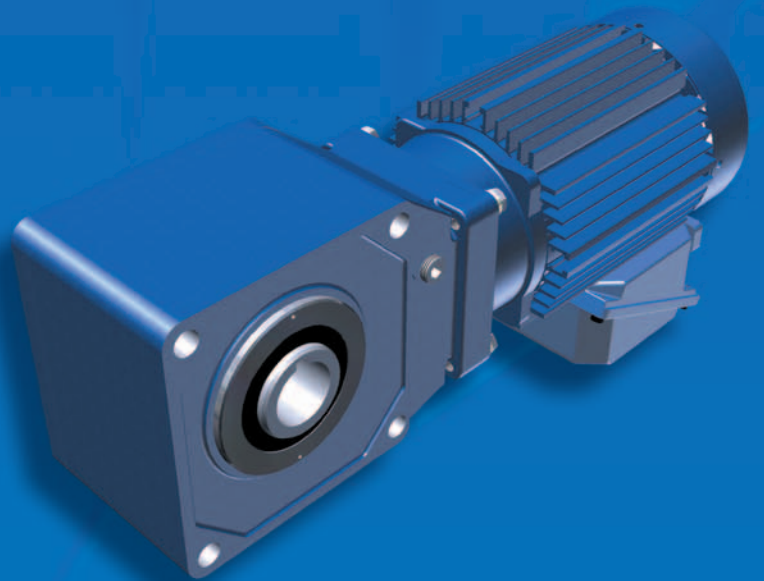


Sumitomo Drive Technologies
Always on the Move

Hyponic[®]

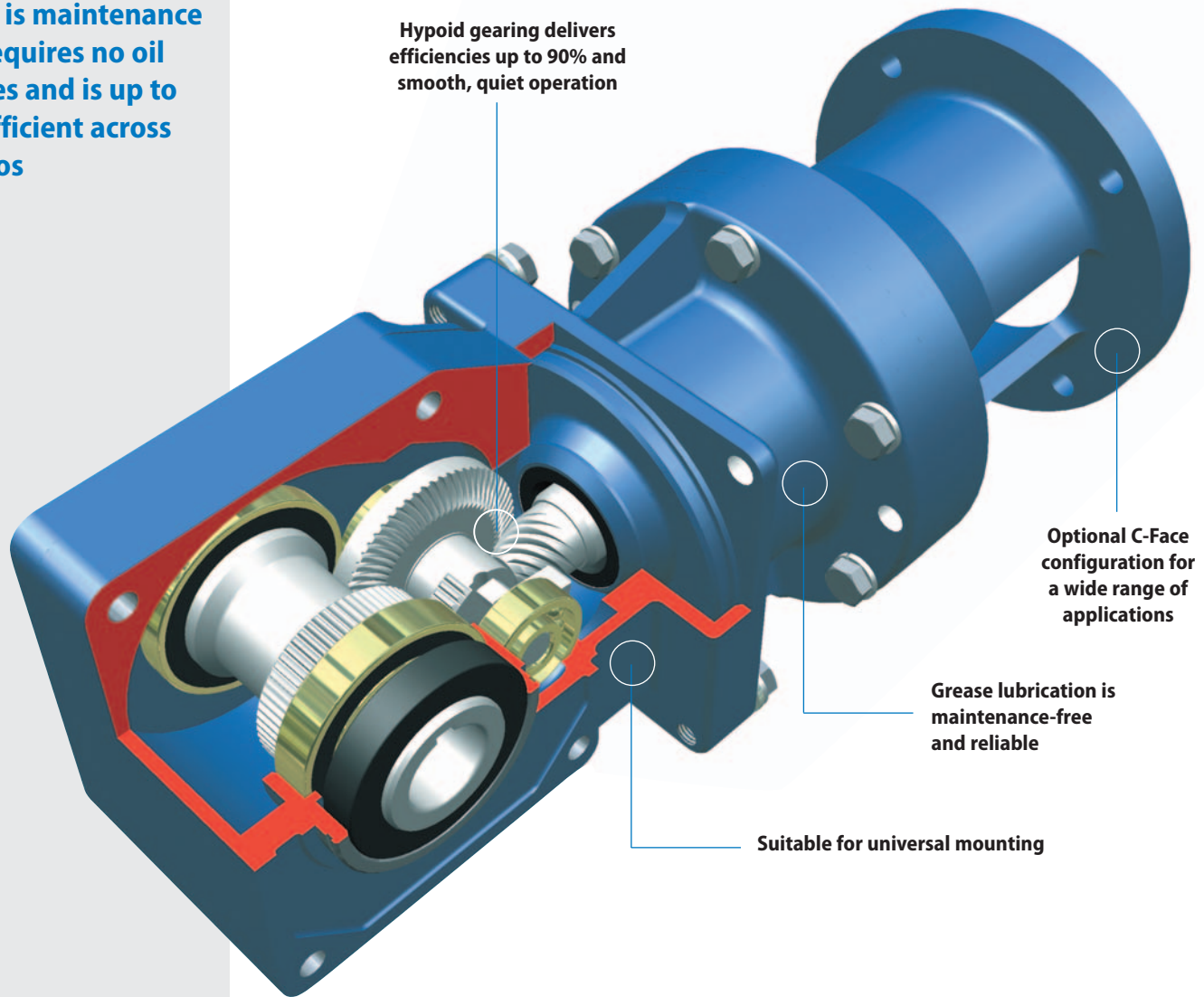


► Highly Efficient, Grease Lubricated, Compact Design

Hyponic[®]

Highly Efficient, Grease Lubricated, Compact Design

- ▶ Grease lubricated design is maintenance free, requires no oil changes and is up to 90% efficient across all ratios



Hypoid gearing delivers efficiencies up to 90% and smooth, quiet operation

Optional C-Face configuration for a wide range of applications

Grease lubrication is maintenance-free and reliable

Suitable for universal mounting

Quiet, Compact and Maintenance-Free

- ▶ All-steel hypoid gear design transmits torque more efficiently for more torque density in a compact unit

Product Description

The Sumitomo Hyponic® Gearmotor represents 60 years of excellence in the design and manufacture of premium gearing solutions. With **more than two million Hyponics** currently in service, the product features a compact, modular housing, maintenance-free grease lubrication and high efficiency operation. Options include C-Face speed reducer configurations and gearmotors. Washdown duty Hyponic® gearmotors are the ideal choice for bottling, bakery, and food processing industries. Sumitomo's patented, all-steel hypoidal gear technology leads the industry in quiet operation and high efficiency. The Hyponic® significantly outperforms worm gearing across ratios from 10:1 to 240:1.

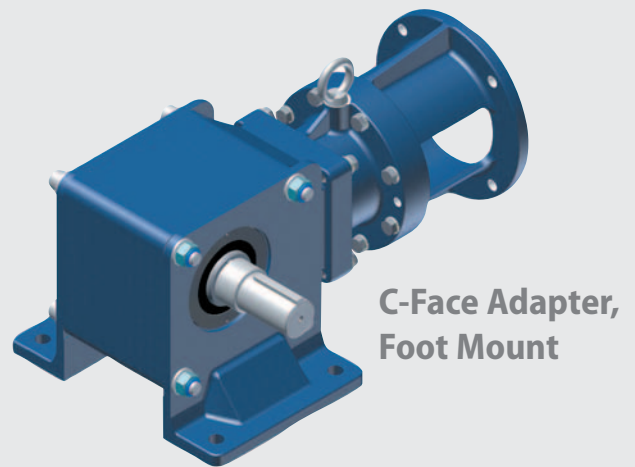
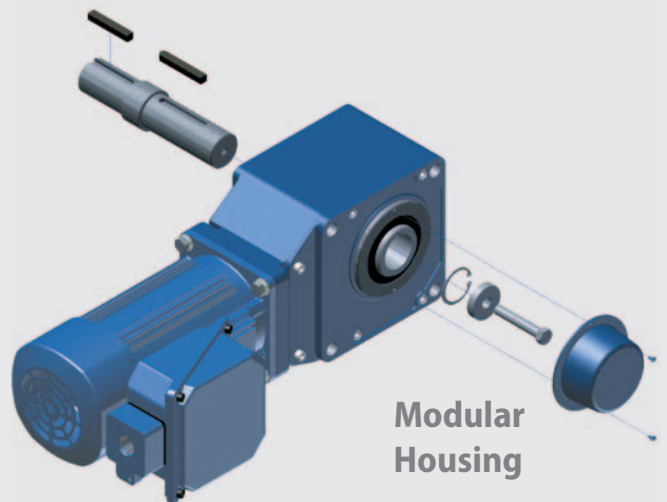
Features & Benefits

- Patented Hyponic gear technology is **up to 90% efficient** across all ratios and requires no cooling fan
- **All-steel hypoid gear design** transmits torque more efficiently for more torque density in a compact unit
- Maintenance-free grease lubrication eliminates oil changes
- **Compact, lightweight** design in an aluminum, corrosion resistant housing with optional washdown protection
- Optional plug-in shaft and bolt-on feet afford multiple mounting configurations
- Hollow bore makes **installation and retrofit quick and easy**
- **Extremely quiet**, smooth operation is ideal for commercial use
- **Two-Year warranty**
- Optional, popular keyed-hollow bore sizes available from stock: 1-3/16", 1-7/16", 1-15/16", 2-3/16"

Specifications

Ratios:	5:1 up to 1440:1
HP:	1/8 to 7.5 HP
Maximum Torque:	10,886 in-lbs.
Electrical:	230/460 VAC (Single and 3-Phase)
Housing:	Lightweight, corrosion-resistant aluminum
Mounting:	Flange, Bolt-On Feet
Shafts:	Hollow, Solid
Input:	C-Face Adapter or Integral Motor

► Optional plug-in shaft and bolt-on feet enhance Hyponic® mounting flexibility



► Applications

- Bottling & Food Processing
- Commercial Bakery Lines
- Sorting Machines
- Automotive Assembly Plants
- Conveyor Lines & Material Handling
- Wood Processing & Paper Products
- Residential Elevators & Lifts
- Automated Bay & Dock Door Drives
- Crushers
- Dehydrators
- Packaging

Product Range Standard Motor and Reducer Combinations

Gearmotor Options

- UL
- Class F Insulation, 1.15 SF
- Induction (single or 3-phase)
- Brake
- Inverter Duty
- Washdown Duty
- High Humidity Duty
- Mounting Plates - Foot and Flange

Reducer Options

- Weather-proof Duty
- Washdown Duty
- OSHA Coupling Guard
- Torque Arm
- Plug-in Solid Shaft
- Mounting Plates - Foot and Flange



Gearmotor Reduction Ratios 5 - 1440

Combinations with 1750 RPM motor

Ratio	5	7	10	12	15	20	25	30	40	50	60	80	100	120	150	200	240	300	360	480	560	750	900	1200	1440	
Output Speed RPM (60 Hz)	350	250	175	146	117	88	70	58	44	35	29	22	18	15	12	8.8	7.3	5.8	4.9	3.7	3.1	2.3	1.9	1.46	1.22	
3-Phase	1/8	•	•	•	•	•	•	•	•	•	•	•	•	•	•	•	•	•	•	•	•	•	•	•	•	
	1/4	•	•	•	•	•	•	•	•	•	•	•	•	•	•	•	•	•	•	•	•	•	•	•	•	
	1/3	•	•	•	•	•	•	•	•	•	•	•	•	•	•	•	•	•	•	•	•	•	•	•	•	
	1/2	•	•	•	•	•	•	•	•	•	•	•	•	•	•	•	•	•	•	•	•	•	•	•	•	
	3/4	•	•	•	•	•	•	•	•	•	•	•	•	•	•	•	•	•	•	•	•	•	•	•	•	
	1	•	•	•	•	•	•	•	•	•	•	•	•	•	•	•	•	•	•	•	•	•	•	•	•	
	1.5	•	•	•	•	•	•	•	•	•	•	•	•	•	•	•	•	•	•	•	•	•	•	•	•	
	2	•	•	•	•	•	•	•	•	•	•	•	•	•	•	•	•	•	•	•	•	•	•	•	•	•
	3	•	•	•	•	•	•	•	•	•	•	•	•	•	•	•	•	•	•	•	•	•	•	•	•	•
	5	•	•	•	•	•	•	•	•	•	•	•	•	•	•	•	•	•	•	•	•	•	•	•	•	•
Single Phase	1/8	•	•	•	•	•	•	•	•	•	•	•	•	•	•	•	•	•	•	•	•	•	•	•	•	
	1/4	•	•	•	•	•	•	•	•	•	•	•	•	•	•	•	•	•	•	•	•	•	•	•	•	
	1/2	•	•	•	•	•	•	•	•	•	•	•	•	•	•	•	•	•	•	•	•	•	•	•	•	
Inverter Duty	1/8	•	•	•	•	•	•	•	•	•	•	•	•	•	•	•	•	•	•	•	•	•	•	•	•	
	1/4	•	•	•	•	•	•	•	•	•	•	•	•	•	•	•	•	•	•	•	•	•	•	•	•	
	1/2	•	•	•	•	•	•	•	•	•	•	•	•	•	•	•	•	•	•	•	•	•	•	•	•	
	1	•	•	•	•	•	•	•	•	•	•	•	•	•	•	•	•	•	•	•	•	•	•	•	•	
	2	•	•	•	•	•	•	•	•	•	•	•	•	•	•	•	•	•	•	•	•	•	•	•	•	



C-Face Reducer Options

Frame Size	Ratio (:1)	Standard Bore* (inches)	Output Torque at 1750 RPM Input (in-lb)	Available Motor Frames
1120	5-60	3/4	41.1-246	42C 48C 56C
1230	80-240	1	328-867	42C 48C 56C
1220	5-60	1	82.1-493	42C 48C 56C
1330	80-240	1 1/4	657-1724	42C 48C 56C
1320	5-60	1 1/4	165-982	143-145TC 56C
1430	80-240	1 3/8	1314-3448	42C 48C 56C
1420	5-60	1 3/8	316-1920	56C 143-145TC
1530	80-240	1 1/2	2627-6470	56C 143-145TC
1520	5-60	1 1/2	452-3793	56C 143-145TC 182-184TC
1531	40-80	1 1/2	3669-5504	56C 143-145TC 182-184TC

*Optional bore sizes are available

Headquarters & Manufacturing

4200 Holland Boulevard
Chesapeake, VA 23323
Tel: 757-485-3355
Fax: 757-487-3075
E-mail: marketing@suminet.com

North & South America

USA: 757-485-3355
Canada: Toronto 905-469-1050
Mexico: Monterrey 011-52-81-8369-3697/8
Brazil: Sao Paulo 011-55-11-5585-3600
Chile: Santiago 011-562-786-6963
Argentina: Buenos Aires 011-54-11-4765-5332
For worldwide location details: www.sumitomodrive.com

World Headquarters - Japan

Sumitomo Heavy Industries, Ltd.
Power Transmission & Controls Group
5-9-11, KITA-Shinagawa, Shinagawa-Ku
Tokyo 141-8686 Japan
Tel: 011-813-5488-8363 • Fax: 011-813-5488-8365